



ASTARO WIRELESS SECURITY DATASHEET

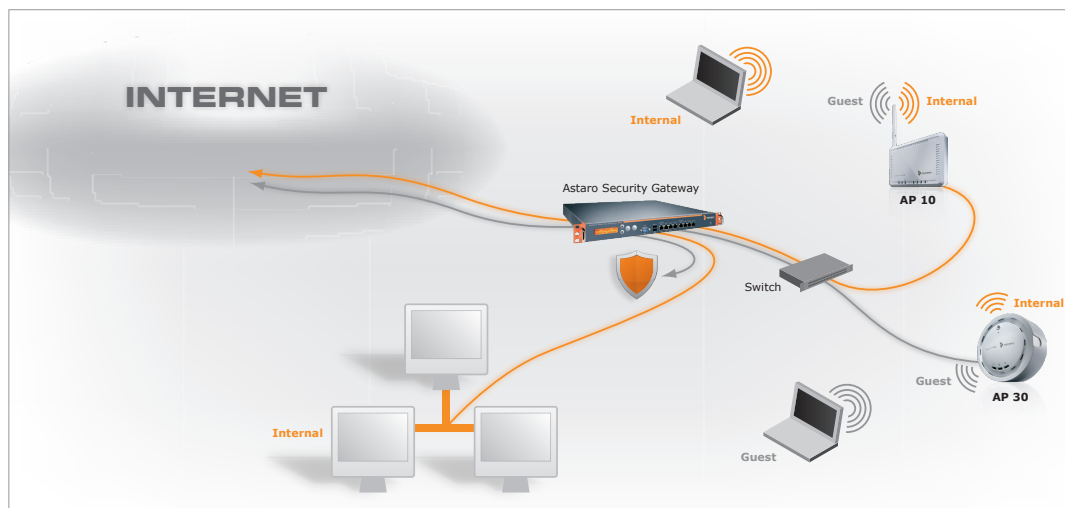


Simplifying Managed Wireless Security

Every organization needs wireless networking, but existing solutions either lack important functionality or are expensive and difficult to manage. Astaro Wireless Security is a new approach that dramatically simplifies the operation of secure and reliable wireless networks. Its affordable and configuration-less access points in combination with the built-in wireless controller in Astaro Security Gateway redefines wireless networking for small and medium businesses.

Beta Program!

Our Wi-Fi beta program will begin soon. Check out www.astaro.com for updates.



Benefits

- No local configuration of the access points required
- Easy setup of wireless guest Internet access
- Integrated UTM security
- Faster file and data transfers
- Uninterrupted signal covering the whole office
- Quick setup of multiple wireless networks

USABLE

Wireless Controller

Astaro Security Gateway acts as a wireless controller centrally managing all access points.

Configuration-less

Plug the access point anywhere into your network, it will find the controller, connect and start transmitting automatically.

Guest Access

Easily provide wireless guest Internet access without the risk of compromising the integrity of your network.

SECURE

Integrated Security

Seamlessly integrate wireless access points into ASG and benefit from Astaro's award winning security technology.

User Authentication

Support of state-of-the-art authentication and encryption ensures the solution is as secure as it gets.

Keeping Control

Monitor all APs and wireless clients centrally and easily detect failed authentication attempts or rogue access points.

ACCESSIBLE

802.11n Support

Support of the newest wireless networking standard for more and faster connections.

Fast Roaming

Provide seamless access to your complete wireless network when roaming between the APs in your company.

Wireless Zones

Easily set up multiple wireless zones (SSIDs) each having different authentication and privacy settings!

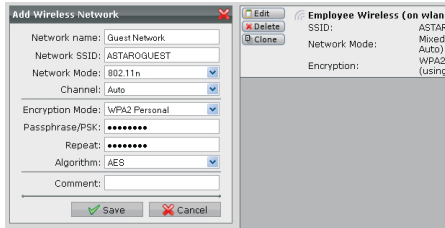
„What I really like about Astaro's integrated wireless security approach is that it frees our administrators from separately managing an expensive enterprise wireless solution.“

*Jason Richards, CEO
Vineyard Networks*

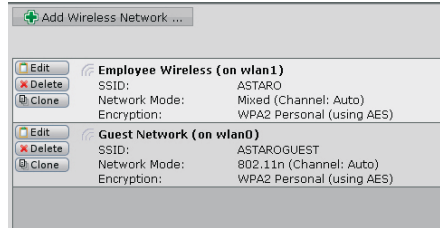


User Interface

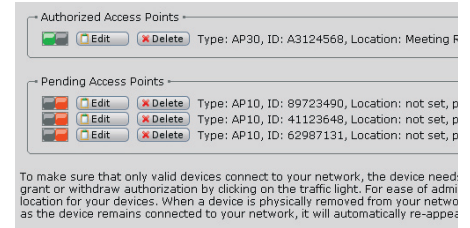
Astaro Wireless Security is a new approach that dramatically simplifies the operation of secure and reliable wireless networks through Astaro Security Gateway's WebAdmin.



Configuration of wireless networks





List of wireless networks



Access point detection and authorization

Technical Specifications

| Wireless Controller | ASG 110 | ASG 120 | ASG 220 | ASG 320 | ASG 425 | ASG 525 | ASG 625 |
|-----------------------------------|---|---------|---------|---|---------|---------|---------|
| Recommended Sizing | | | | | | | |
| Number of Access Points | 2 | 4 | 8 | 16 | 32 | 64 | 128 |
| Number of Wireless Users | 10 | 25 | 50 | 100 | 250 | 500 | 1,000 |
| Security Features | | | | | | | |
| Wi-Fi Protected Access (WPA/WPA2) | • | • | • | • | • | • | • |
| Wired Equivalent Privacy (WEP) | • | • | • | • | • | • | • |
| 802.1x Authentication (RADIUS) | • | • | • | • | • | • | • |
| Multiple SSIDs | 8 | 8 | 8 | 8 | 8 | 8 | 8 |
| Access Points | | | | | | | |
| | AP 10 | | | AP 30 | | | |
| |  | | |  | | | |
| Capacity | | | | | | | |
| Maximum Users | Up to 10 users | | | Up to 30 users | | | |
| Maximum Throughput | 150 Mbps | | | 300 Mbps | | | |
| Physical Interfaces | | | | | | | |
| LAN Interfaces | 1 x 10/100 Base TX | | | 1 x 10/100 Base TX | | | |
| Wireless Interfaces | 802.11b/g/n 2.4 GHz | | | 802.11b/g/n 2.4 GHz | | | |
| Antenna | 1 x detachable dipole antenna | | | 3 x directional internal antennas | | | |
| Power over Ethernet (802.3af) | o | | | • | | | |
| LED Display | Power, LAN, WLAN | | | Power, LAN, WLAN | | | |
| Power Supply | 90-240 V, 50/60 Hz | | | 90-240 V, 50/60 Hz | | | |
| Physical Specification | | | | | | | |
| Dimensions (W x H x D) | 124 x 96 x 25 mm | | | ø 120 mm, height 50 mm | | | |
| Weight | 130 g | | | 230 g | | | |
| Mounting | Desktop/wall | | | Desktop/ceiling | | | |
| Safety Regulations | | | | | | | |
| Certifications | FCC, CE | | | FCC, CE | | | |

Contact

Visit us at <http://www.astaro.com> or contact the Astaro solutions partner close to you.

Your Astaro Partner



www.astaro.com