



ASTARO RED 10 DATASHEET

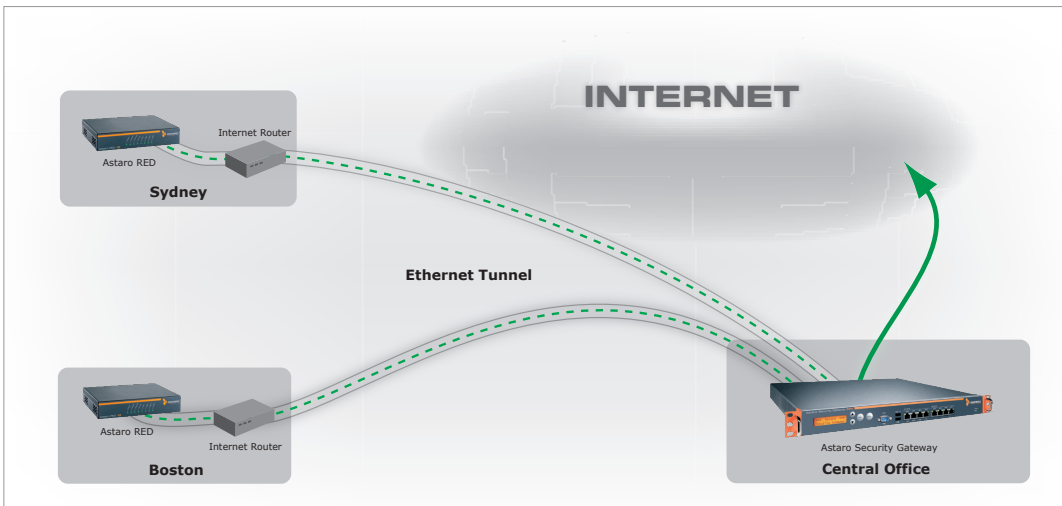


Reinventing Branch Office Security

If your business has many small branch offices like travel agencies, retail stores, gas stations etc., then you need an easy and affordable way to connect them back to the headquarter and to keep their Internet access secure – for that, RED makes your life a lot easier.

Astaro RED (Remote Ethernet Device) is the first security gateway requiring no local setup. Its complete configuration is done centrally via an Astaro Security Gateway located at your main office and automatically distributed to the RED appliances.

Preorder Today!
Due to the high demand we recommend preordering, to be among the first users.



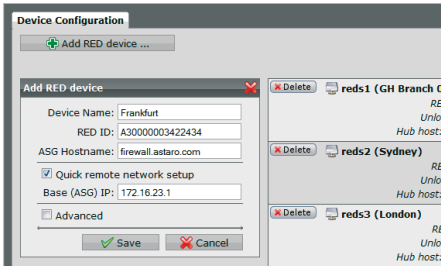
- Benefits**
- > Fast mass roll-out, up to 100 appliances per day
 - > No Local IT-knowledge required at the remote site
 - > Reduces TCO by more than 80%
 - > No maintenance and no recurring costs for branch offices
 - > Strong UTM security
 - > Only one global security policy required

USABLE	SECURE	FLEXIBLE
<p>Central Management Astaro Security Gateway acts as a RED controller centrally managing all RED appliances through a cloud based provisioning service.</p> <p>Configurationless Just plug RED into your Internet router and it will automatically connect to your headquarters.</p> <p>Global Visibility Astaro's built-in reporting integrates RED-connected networks without the need for a separate reporting tool.</p>	<p>Encrypted Tunnel All transferred data is protected using an AES256-encrypted tunnel performing up to 30Mbit/s.</p> <p>Strong Authentication All communication is automatically authenticated using trusted digital X.509 certificates .</p> <p>UTM Filtering Remote sites are fully protected by the Network, Web and Mail Security subscriptions of the Central Office.</p>	<p>Layer 2 VPN tunnel Reliably transfers all traffic between locations, also challenging ones like broadcasts, multicast, netbios or appletalk.</p> <p>IP Address Management Centrally define your DHCP and DNS Server configuration to roll-it-out to all sites connected via RED.</p> <p>Virtual Ethernet Cable RED-connected sites appear like they are physically connected to your Astaro Security Gateway.</p>

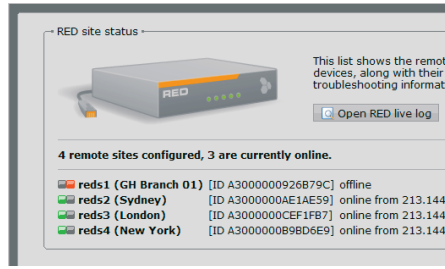
„Treating my off-site locations as if they were just another department in-house is a brilliant idea.“
Mario Techel,
CEO Cobotec



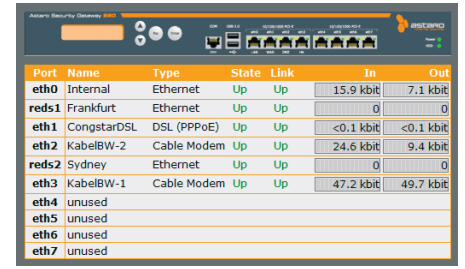
User Interface



Configuration of RED devices




List of RED devices



Dashboard integration

Technical Specifications

Central Astaro Security Gateway	ASG 110/120	ASG 220	ASG 320	ASG 425	ASG 525	ASG 625
Recommended Sizing						
Number of RED Appliances	10	20	40	50	90	150
Maximum RED Throughput	50 Mbps	80 Mbps	120 Mbps	160 Mbps	280 Mbps	360 Mbps
RED Appliance	RED 10					
						
Capacity						
Maximum Users	unrestricted					
Maximum Throughput	30 Mbps					
Physical Interfaces						
LAN Interfaces	4 x 10/100 Base-TX (switch)					
WAN Interfaces	1 x 10/100 Base-TX					
LED Display	Power, System, Internet, Tunnel, 4x LAN					
Power Supply	110-240 VAC, 50-60 Hz, max. 1.6 A					
Physical Specifications						
Chassis	Heavy-duty steel					
Mounting	Desktop					
Dimensions (W x H x D)	155 x 117 x 30 mm					
Weight	510 g/1.12 lbs					
Power Consumptions	< 7 Watts					
Safety Regulations						
Certifications	CE, FCC Class B					

Contact

Visit us at <http://www.astaro.com> or contact the Astaro partner close to you.

Your Astaro Partner



www.astaro.com